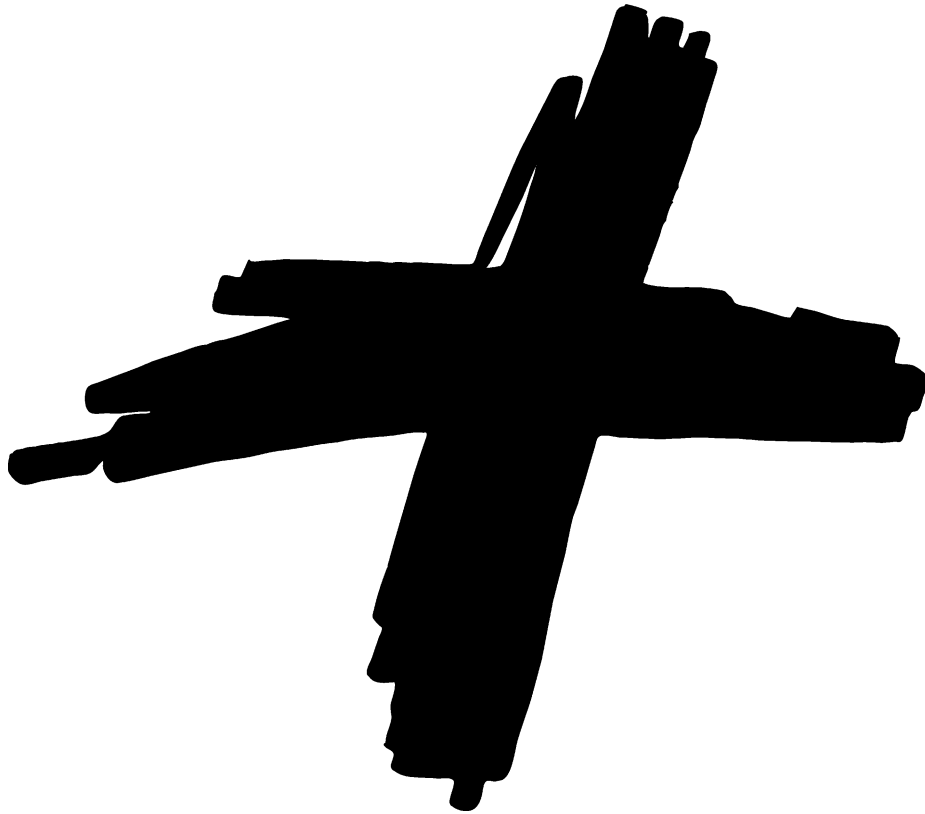


**CHRIST  
LUTHERAN  
CHURCH**  
ZIONSVILLE



---

**Lenten Vespers 1**

**March 12, 2025**

*All members and guests, please fill out the Welcome Form found at the end of your row and pass it on to your neighbor. The pastoral and spiritual care of the members of Christ Church is very important to us. In order to care for all of you, we need to know who is present and who is not. So, please take a moment to sign the pad. The Welcome Forms will be picked up by the ushers at the end of the service.*

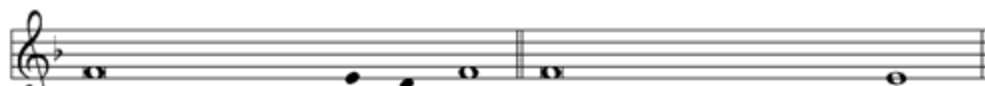
The Service of Evening Prayer has its origin in the Old Testament tradition of praying at fixed hours of the day. In the Church such a service was first practiced in the homes and then moved on to use in congregations and monasteries. The emphasis of the Service of Evening Prayer is Jesus Christ as the Light of the world.

## WE GATHER TO WORSHIP

### PRELUDE

### SERVICE OF LIGHT

### PROCESSION



☩ Jesus Christ is the Light of the world, ☩ the light no darkness can over- come.



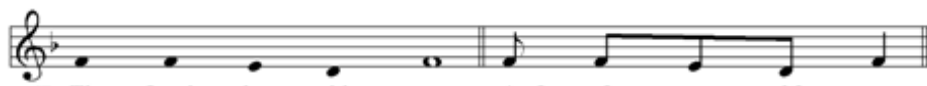
☩ Stay with us, Lord, for it is eve-ning, ☩ and the day is almost o- ver.



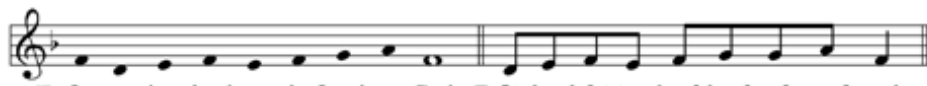
☩ Let your light scat- ter the dark-ness, ☩ and illumine your Church.

### THANKSGIVING

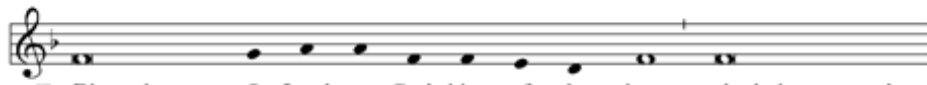
*The Thanksgiving concludes the Service of Light.*



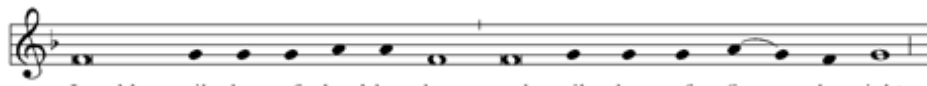
☩ The Lord be with you. ☩ And al - so with you.



☩ Let us give thanks to the Lord our God. ☩ It is right to give him thanks and praise.



☩ Blessed are you, O Lord our God, king of the universe, who led your people



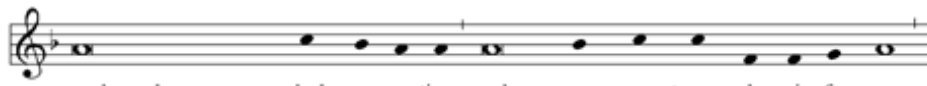
Israel by a pil - lar of cloud by day and a pil - lar of fire by night:



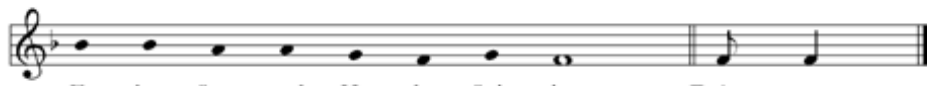
Enlighten our darkness by the light of your Christ; may his Word be a lamp



to our feet and a light to our path; for you are mer - ci - ful,



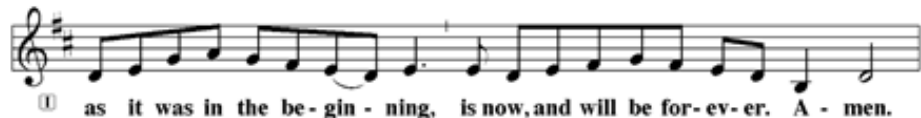
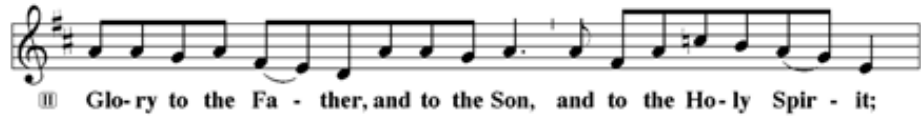
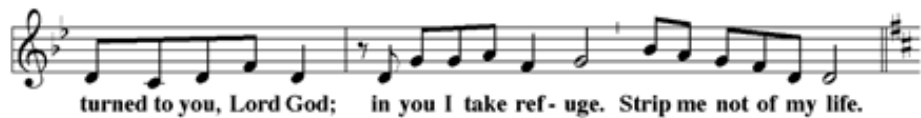
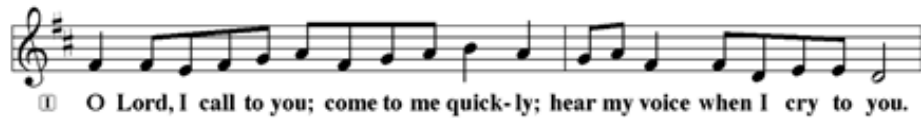
and you love your whole cre - a - tion, and we, your crea - tures, glo - ri - fy you,



Fa - ther, Son, and Ho - ly Spir - it. ☩ A - men

## PSALMODY

The Psalmody begins with this song for forgiveness and protection.



*Silence for meditation.*

P Let the incense of our repentant prayer ascend before you, O Lord, and let your loving kindness descend upon us, that with purified minds we may sing your praises with the Church on earth and the whole heavenly host, and may glorify you forever and ever.

**C Amen.**

*The congregation is seated.*

**READING John 8:12**

**LIGHT**

Again Jesus spoke to them, saying, "I am the light of the world. Whoever follows me will never walk in darkness but will have the light of life."

Word of God, Word of Life.

**C Thanks be to God.**

**HOMILY**

**Pastor Wes Smith**

**LITANY**

*Congregation continues to hum after each "Lord have mercy".*

P In peace, let us pray to the Lord.

⊗ Lord, have mer - cy.

The musical notation consists of a treble and bass clef staff. The treble staff has a key signature of one flat (Bb) and a common time signature (C). The melody is a simple four-note sequence: G4, A4, Bb4, C5. The bass staff provides a harmonic accompaniment with notes: G3, Bb2, C3, G2.

P For the peace from above, and for our salvation, let us pray to the Lord.

⊗ Lord, have mer - cy.

The musical notation is identical to the first response, featuring a treble and bass clef staff with a key signature of one flat and a common time signature. The melody in the treble staff is G4, A4, Bb4, C5, and the bass staff accompaniment is G3, Bb2, C3, G2.

P For the peace of the whole world, for the well-being of the Church of God, and for the unity of all, let us pray to the Lord.

⊗ Lord, have mer - cy.

The musical notation is identical to the previous two responses, featuring a treble and bass clef staff with a key signature of one flat and a common time signature. The melody in the treble staff is G4, A4, Bb4, C5, and the bass staff accompaniment is G3, Bb2, C3, G2.

P For this holy house, and for all who offer here their worship and praise, let us pray to the Lord.

Lord, have mer - cy.

The musical notation consists of a grand staff with a treble clef on the top line and a bass clef on the bottom line. The key signature has one flat (B-flat). The melody is written in the treble clef, and the bass line is in the bass clef. The lyrics 'Lord, have mer - cy.' are written below the treble clef staff.

P For our pastor in Christ, for all servants of the Church, and for all the people, let us pray to the Lord.

Lord, have mer - cy.

The musical notation consists of a grand staff with a treble clef on the top line and a bass clef on the bottom line. The key signature has one flat (B-flat). The melody is written in the treble clef, and the bass line is in the bass clef. The lyrics 'Lord, have mer - cy.' are written below the treble clef staff.

P For our public servants, for the government and those who protect us, that they may be upheld and strengthened in every good deed, let us pray to the Lord.

Lord, have mer - cy.

The musical notation consists of a grand staff with a treble clef on the top line and a bass clef on the bottom line. The key signature has one flat (B-flat). The melody is written in the treble clef, and the bass line is in the bass clef. The lyrics 'Lord, have mer - cy.' are written below the treble clef staff.

P For those who work to bring peace, justice, health, and protection in this and every place, let us pray to the Lord.

Lord, have mer - cy.

The musical notation consists of a grand staff with a treble clef on the top line and a bass clef on the bottom line. The key signature has one flat (B-flat). The melody is written in the treble clef, and the bass line is in the bass clef. The lyrics 'Lord, have mer - cy.' are written below the treble clef staff.

P For those who bring offerings, those who do good works in this congregation, those who toil, those who sing, and all the people here present who await from the Lord great and abundant mercy, let us pray to the Lord.

Lord, have mer - cy.

The musical notation consists of a grand staff with a treble clef on the top line and a bass clef on the bottom line. The key signature has one flat (B-flat). The melody is written in the treble clef, and the bass line is in the bass clef. The lyrics 'Lord, have mer - cy.' are written below the treble clef staff.

P For favorable weather, for an abundance of the fruits of the earth, and for peaceful times, let us pray to the Lord.

Lord, have mer - cy.

P For our deliverance from all affliction, wrath, danger, and need, let us pray to the Lord.

Lord, have mer - cy.

P For the faithful who have gone before us and are at rest, let us give thanks to the Lord.

Lord, have mer - cy.

P Help, save, comfort, and defend us, gracious Lord.

*Silence for meditation*

P Rejoicing in the fellowship of all the saints, let us commend ourselves, one another, and our whole life to Christ, our Lord.

To you, O Lord.

P O God, from whom come all holy desires, all good counsels, and all just works: Give to us, your servants, that peace which the world cannot give, that our hearts may be set to obey your commandments; and also that we, being defended from the fear of our enemies, may live in peace and quietness; through the merits of Jesus Christ our Savior, who lives and reigns with you and the Holy Spirit, God forever. **C Amen.**

## THE LORD'S PRAYER

P Lord, remember us in your kingdom, and teach us to pray:

**C Our Father in heaven, hallowed be your name, your kingdom come, your will be done, on earth as in heaven. Give us today our daily bread. Forgive us our sins as we forgive those who sin against us. Save us from the time of trial and deliver us from evil. For the kingdom, the power, and the glory are yours, now and forever. Amen.**

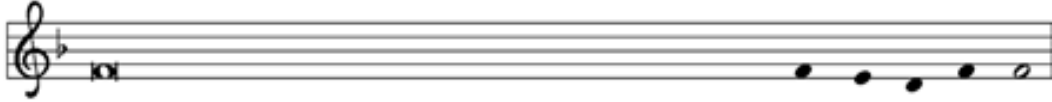


Let us bless the Lord. Thanks be to God.

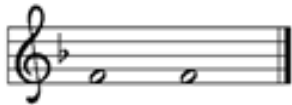
**OFFERING**

P Let us pray: Gracious God, we give you thanks for the day, especially for the good we were permitted to give and to receive; the day is now past, and we commit it to you. We entrust to you the night; we rest securely, for you are our help, and you neither slumber nor sleep; through Jesus Christ our Lord. **C Amen.**

**BENEDICTION**



Almighty God, the Father, + the Son, and the Holy Spirit, bless and pre-serve us.



A - men.

Please take out the red hymnal.

**HYMN**

***I Want to Walk as a Child of the Light***

**ELW 815**



1 I want to walk as a child of the light. I want to  
2 I want to see . . . the bright-ness of God. I want to  
3 I'm look - ing for . . . the com - ing of Christ. I want to



fol - low Je - sus. God set the stars to give  
look at Je - sus. Clear Sun of righ - teous-ness,  
be with Je - sus. When we have run . . . with



light to the world. The star of my life is Je - sus.  
shine on my path, and show me the way to the Fa - ther.  
pa - tience the race, we shall know the joy of Je - sus.

*Refrain*



In him there is no dark-ness at all. The night and the



day are both a - like. The Lamb is the light of the



cit - y of God. Shine in my heart, Lord Je - sus.

*Silence for prayer*

## POSTLUDE

From sundaysandseasons.com. Copyright 2025 Augsburg Fortress. All rights reserved. Reprinted by permission under Augsburg Fortress Liturgies Annual License #23794. Reprinted under OneLicense.net #A-725192



## SERVING US AT WORSHIP THIS EVENING

Pastor: Rev. Wesley Smith, III  
Director of Music & Organist: Rhonda Blacklock

**Usher:** Angie Eugenio

**AV Assistant:** Ray Boucher

## CONTACT INFORMATION

600 North Ford Road, Zionsville, IN 46077 | [clczionsville.org](http://clczionsville.org) | 317-873-3242

### **Wes Smith**

Pastor  
[pastor@clczionsville.org](mailto:pastor@clczionsville.org)

### **Tina Lizama**

Office Administrator  
[office@clczionsville.org](mailto:office@clczionsville.org)

### **Rhonda Blacklock**

Music Director  
[musicdirector@clczionsville.org](mailto:musicdirector@clczionsville.org)

### **Melissa Woldman**

Preschool Director  
[preschool@clczionsville.org](mailto:preschool@clczionsville.org), 317-873-3232

### **Jeff Berger**

Governance Board President  
[president@clczionsville.org](mailto:president@clczionsville.org)

### **Connie Steinhart**

Financial Secretary  
[giving@clczionsville.org](mailto:giving@clczionsville.org)