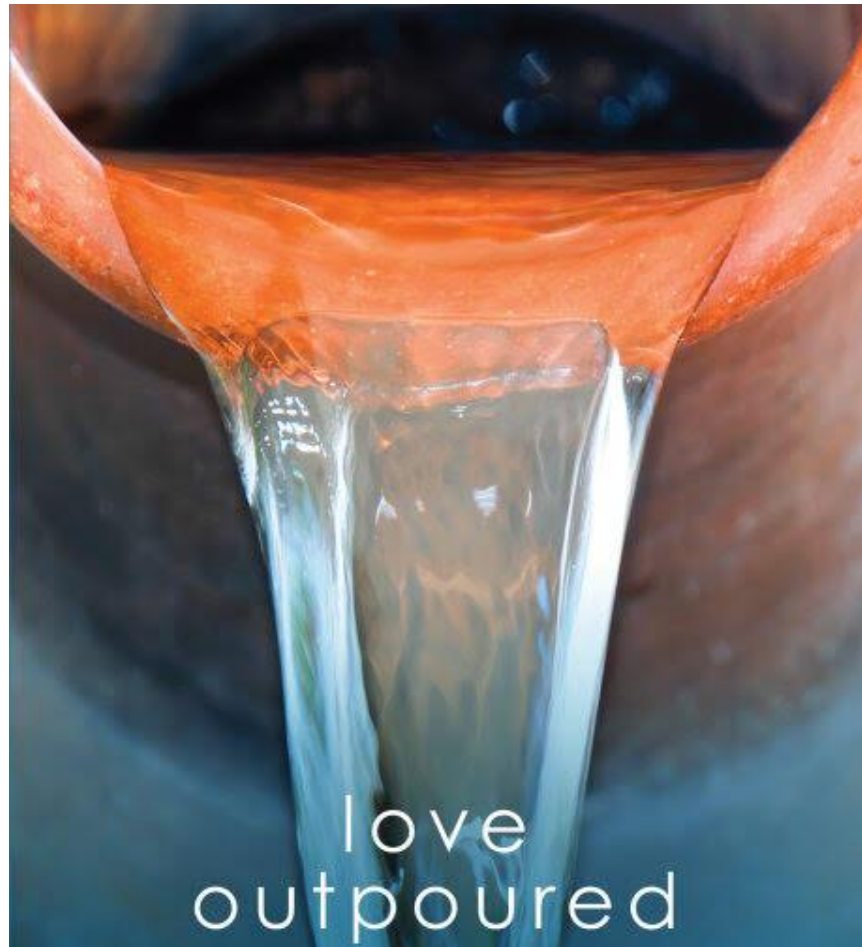


**CHRIST  
LUTHERAN  
CHURCH**  
ZIONSVILLE



---

## **Lenten Service**

**February 25, 2026**

*All members and guests, please fill out the Welcome Form found at the end of your row and pass it on to your neighbor. The pastoral and spiritual care of the members of Christ Church is very important to us. In order to care for all of you, we need to know who is present and who is not. So, please take a moment to sign the pad. The Welcome Forms will be picked up by the ushers at the end of the service.*

The Service of Evening Prayer has its origin in the Old Testament tradition of praying at fixed hours of the day. In the Church such a service was first practiced in the homes and then moved on to use in congregations and monasteries. The emphasis of the Service of Evening Prayer is Jesus Christ as the Light of the world.

## WE GATHER TO WORSHIP

### PRELUDE

### SERVICE OF LIGHT

### PROCESSION



☐ Jesus Christ is the Light of the world, ☑ the light no darkness can over- come.



☐ Stay with us, Lord, for it is eve-ning, ☑ and the day is almost o- ver.



☐ Let your light scat- ter the dark-ness, ☑ and illumine your Church.

### HYMN

### *Joyous Light of Glory*

ELW 229



Joy-ous light of glo - ry:



of the im - mor - tal Fa - ther; heav - en - ly, ho - ly,



bles - ed Je - sus Christ. We have come to the



set - ting of the sun, and we look to the eve - ning light.



We sing to God, the Fa - ther, Son, and Ho - ly Spir - it:

You are wor - thy of be - ing praised with pure voic - es for -  
 ev - er. O Son of God, O giv - er of life:  
 The u - ni - verse pro - claims your glo - ry.

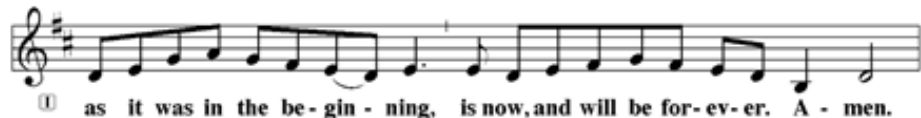
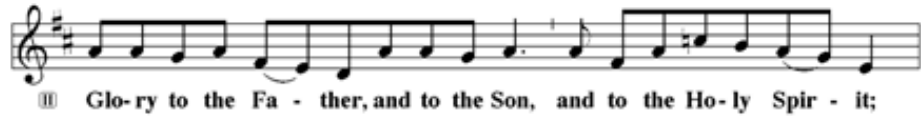
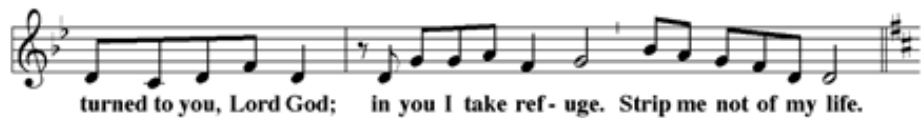
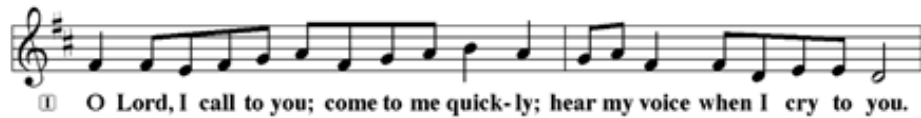
## THANKSGIVING

*The Thanksgiving concludes the Service of Light.*

☩ The Lord be with you. ☩ And al - so with you.  
 ☩ Let us give thanks to the Lord our God. ☩ It is right to give him thanks and praise.  
 ☩ Blessed are you, O Lord our God, king of the universe, who led your people  
 Israel by a pil - lar of cloud by day and a pil - lar of fire by night:  
 Enlighten our darkness by the light of your Christ; may his Word be a lamp  
 to our feet and a light to our path; for you are mer - ci - ful,  
 and you love your whole cre - a - tion, and we, your crea - tures, glo - ri - fy you,  
 Fa - ther, Son, and Ho - ly Spir - it. ☩ A - men

## PSALMODY

The Psalmody begins with this song for forgiveness and protection.



*Silence for meditation.*

**P** Let the incense of our repentant prayer ascend before you, O Lord, and let your loving kindness descend upon us, that with purified minds we may sing your praises with the Church on earth and the whole heavenly host, and may glorify you forever and ever.

**C Amen.**

*The congregation is seated.*

**READING John 8:12**

**LIGHT**

L Again Jesus spoke to them, saying, "I am the light of the world. Whoever follows me will never walk in darkness but will have the light of life."

L Word of God, Word of Life.

**C Thanks be to God.**

**LENTEN MEDITATION**

**"Love Outpoured"**

**Angie & Randy Eugenio**

**LITANY**

*Congregation continues to hum after each "Lord have mercy".*

Cantor: In peace, let us pray to the Lord.

⊗ Lord, have mer - cy.

The musical notation consists of a treble and bass clef staff. The treble clef staff has a key signature of one flat (Bb) and a common time signature (C). The melody is composed of four quarter notes: G4, A4, Bb4, and C5. The bass clef staff provides a harmonic accompaniment with four quarter notes: G3, Bb3, C4, and D4.

Cantor: For the peace from above, and for our salvation, let us pray to the Lord.

⊗ Lord, have mer - cy.

The musical notation is identical to the first response, featuring a treble and bass clef staff in Bb and C. The treble clef staff has a melody of G4, A4, Bb4, and C5, while the bass clef staff has an accompaniment of G3, Bb3, C4, and D4.

Cantor: For the peace of the whole world, for the well-being of the Church of God, and for the unity of all, let us pray to the Lord.

⊗ Lord, have mer - cy.

The musical notation is identical to the previous two responses, featuring a treble and bass clef staff in Bb and C. The treble clef staff has a melody of G4, A4, Bb4, and C5, while the bass clef staff has an accompaniment of G3, Bb3, C4, and D4.

Cantor: For this holy house, and for all who offer here their worship and praise, let us pray to the Lord.

Lord, have mer - cy.

The musical notation consists of a grand staff with a treble clef on the top line and a bass clef on the bottom line. The key signature has one flat (B-flat). The melody is written in the treble clef, and the accompaniment is in the bass clef. The lyrics "Lord, have mer - cy." are written below the treble staff.

Cantor: For our pastor in Christ, for all servants of the Church, and for all the people, let us pray to the Lord.

Lord, have mer - cy.

The musical notation consists of a grand staff with a treble clef on the top line and a bass clef on the bottom line. The key signature has one flat (B-flat). The melody is written in the treble clef, and the accompaniment is in the bass clef. The lyrics "Lord, have mer - cy." are written below the treble staff.

Cantor: For our public servants, for the government and those who protect us, that they may be upheld and strengthened in every good deed, let us pray to the Lord.

Lord, have mer - cy.

The musical notation consists of a grand staff with a treble clef on the top line and a bass clef on the bottom line. The key signature has one flat (B-flat). The melody is written in the treble clef, and the accompaniment is in the bass clef. The lyrics "Lord, have mer - cy." are written below the treble staff.

Cantor: For those who work to bring peace, justice, health, and protection in this and every place, let us pray to the Lord.

Lord, have mer - cy.


The musical notation consists of a grand staff with a treble clef on the top line and a bass clef on the bottom line. The key signature has one flat (B-flat). The melody is written in the treble clef, and the accompaniment is in the bass clef. The lyrics "Lord, have mer - cy." are written below the treble staff.

Cantor: For those who bring offerings, those who do good works in this congregation, those who toil, those who sing, and all the people here present who await from the Lord great and abundant mercy, let us pray to the Lord.

Lord, have mer - cy.

The musical notation consists of a grand staff with a treble clef on the top line and a bass clef on the bottom line. The key signature has one flat (B-flat). The melody is written in the treble clef, and the accompaniment is in the bass clef. The lyrics "Lord, have mer - cy." are written below the treble staff.

Cantor: For favorable weather, for an abundance of the fruits of the earth, and for peaceful times, let us pray to the Lord.



Lord, have mer - cy.

The musical notation consists of a grand staff with a treble clef on the top line and a bass clef on the bottom line. The key signature has one flat (B-flat). The melody is written in the treble clef, and the accompaniment is in the bass clef. The lyrics are written below the treble staff.

Cantor: For our deliverance from all affliction, wrath, danger, and need, let us pray to the Lord.



Lord, have mer - cy.

The musical notation consists of a grand staff with a treble clef on the top line and a bass clef on the bottom line. The key signature has one flat (B-flat). The melody is written in the treble clef, and the accompaniment is in the bass clef. The lyrics are written below the treble staff.

Cantor: For the faithful who have gone before us and are at rest, let us give thanks to the Lord.



Lord, have mer - cy.

The musical notation consists of a grand staff with a treble clef on the top line and a bass clef on the bottom line. The key signature has one flat (B-flat). The melody is written in the treble clef, and the accompaniment is in the bass clef. The lyrics are written below the treble staff.

Cantor: Help, save, comfort, and defend us, gracious Lord.

*Silence for meditation*

Cantor: Rejoicing in the fellowship of all the saints, let us commend ourselves, one another, and our whole life to Christ, our Lord.



To you, O Lord.

The musical notation consists of a grand staff with a treble clef on the top line and a bass clef on the bottom line. The key signature has one flat (B-flat). The melody is written in the treble clef, and the accompaniment is in the bass clef. The lyrics are written below the treble staff.

P O God, from whom come all holy desires, all good counsels, and all just works: Give to us, your servants, that peace which the world cannot give, that our hearts may be set to obey your commandments; and also that we, being defended from the fear of our enemies, may live in peace and quietness; through the merits of Jesus Christ our Savior, who lives and reigns with you and the Holy Spirit, God forever.

**C Amen.**

## THE LORD'S PRAYER

P Lord, remember us in your kingdom, and teach us to pray:

**C Our Father in heaven,  
hallowed be your name,  
your kingdom come,  
your will be done,  
on earth as in heaven.**

**Give us today our daily bread.**

**Forgive us our sins  
as we forgive those  
who sin against us.**

**Save us from the time of trial  
and deliver us from evil.**

**For the kingdom, the power,  
and the glory are yours,  
now and forever. Amen.**



*Please rise as you are able.*

## HYMN

### *Change My Heart, O God*

**ELW 801**



Change my heart, O God; make it ev - er true.

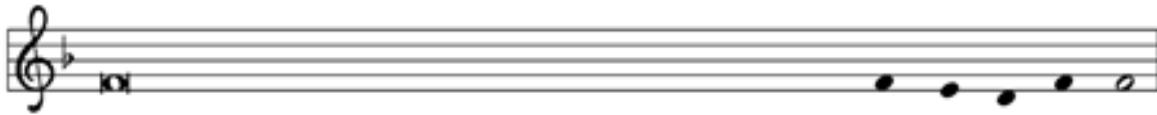


Change my heart, O God; may I be like you.

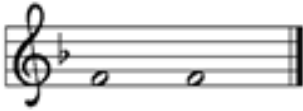


Mold me and make me; this is what I pray.

## BENEDICTION



Almighty God, the Father, + the Son, and the Holy Spirit, bless and pre-serve us.



A - men.

*Silence for prayer*

## POSTLUDE

From sundaysandseasons.com. Copyright 2026 Augsburg Fortress. All rights reserved. Reprinted by permission under Augsburg Fortress Liturgies Annual License #23794. Reprinted under OneLicense.net #A-725192



# LENT & EASTER 2026

**"Love Outpoured"**

**LENTEN DEVOTIONALS AVAILABLE**

## **Easter Egg Hunt**

April 4 | 10am  
FREE - Starts in Sanctuary

## **Lent Wednesdays**

Theme: Love Outpoured

Various people will share when God's love was poured out on them or when they poured God's love out on another.

February 18, 25, March 4, 11, 18, 25

Service | 7pm

February 18, March 4, 18

Dinner | 6pm

On select Wednesdays of Lent, a soup & bread dinner will be offered in the Fellowship Hall.  
Following at 7pm, we will gather in the Sanctuary to worship, sing and pray.

## **Palm Sunday**

March 29 | 10:30am

Procession with Palms  
From the cross on the hill  
(Weather permitting)

Spring/Summer Coat Drive

## **Maundy Thursday**

April 2 | 7:00pm

Evening Prayer in the Sanctuary  
(No meal)

## **Good Friday**

April 3 | 6:30pm

At St. Francis In-The-Fields  
1525 Mulberry St. Zionsville

## **Easter Sunday**

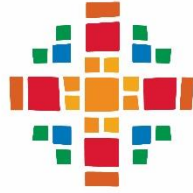
### **Worship Service April 5 | 10:30am**

Celebration of the Resurrection of Our Lord  
with special music.

*Services Streamed*

**Christ Lutheran Church**

600 North Ford Road | Zionsville, IN 46077 | 317.873.3242 | clczionsville.org



**CHRIST  
LUTHERAN  
CHURCH**  
ZIONSVILLE

## SERVING US AT WORSHIP THIS EVENING

Interim Pastor: Hope Moran  
Director of Music & Organist: Rhonda Blacklock

**Cantor:** Tom Conrad  
**Usher:** Tony Firmani  
**Lector:** Joe Pittman  
**AV Assistant:** Bob Behrend

## CONTACT INFORMATION

600 North Ford Road, Zionsville, IN 46077 | [clczionsville.org](http://clczionsville.org) | 317-873-3242

**Hope Moran**  
Interim Pastor  
[pastor@clczionsville.org](mailto:pastor@clczionsville.org)

**Melissa Woldman**  
Preschool Director  
[preschool@clczionsville.org](mailto:preschool@clczionsville.org), 317-873-3232

**Rhonda Blacklock**  
Music Director  
[musicdirector@clczionsville.org](mailto:musicdirector@clczionsville.org)

**Jen McKenzie**  
Governance Board President  
[president@clczionsville.org](mailto:president@clczionsville.org)

**Tina Lizama**  
Office Administrator  
[office@clczionsville.org](mailto:office@clczionsville.org)

**Connie Steinhart**  
Financial Secretary  
[giving@clczionsville.org](mailto:giving@clczionsville.org)

**Anne Behrend**  
Finance Administrator  
[billing@clczionsville.org](mailto:billing@clczionsville.org)



*Please scan if you would like to give an electronic offering.*